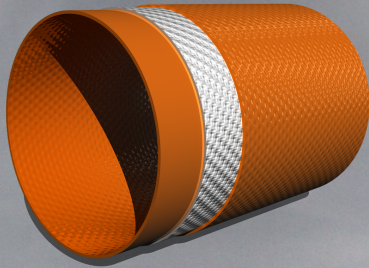




FLEXIGOM[®] PU DRAG



CONSTRUCTION

Interior and exterior layer:

Extruded thermoplastic polyurethane. Minimal flow loss thanks to its smooth interior wall. Orange colour. Shiny surface without grooves.

Reinforced middle textile:

Circular weaved outer layer made from high tenacity polyester thread. No defects (broken threads, knots, etc.).

PERFORMANCE

- Excellent resistance to abrasion and intensive use by professionals.
- Highly resistant to oil, gasoline and a wide range of chemicals.
- Very resistant to both contact and radiant heat.
- Light and flexible hose even at low temperatures (-15°C). Easy to handle and roll up.
- Highly resistant to breakage thanks to the specially-made textile.
- No maintenance or drying necessary.

USES

- Agriculture.
- Substitution of rigid well pipes.
- Civil works.
- Compressed air.
- Special high-pressure processes.

TECHNICAL CHARACTERISTICS

DIAMETER		USE	COLOR	BREAKAGE PRESSURE	WORKING PRESSURE	WEIGHT	THICKNESS		TRACTION	
inches	mm.						inches	mm.	Lbs	Kg
4"	102	DRAG	ORANGE	52	17,5	0,87	0,138	3,5	35274	16000
4,5"	115	DRAG	ORANGE	42	14	0,98	0,138	3,5	40785	18500
5"	127	DRAG	ORANGE	42	14	1,70	0,140	3,56	44000	19800
5,5"	140	DRAG	ORANGE	42	14	1,86	0,145	3,68	45000	20250
6"	153	DRAG	ORANGE	42	14	2,01	0,15	3,81	60000	27000
7"	178	DRAG	ORANGE	42	14	2,50	0,155	3,94	70000	31500